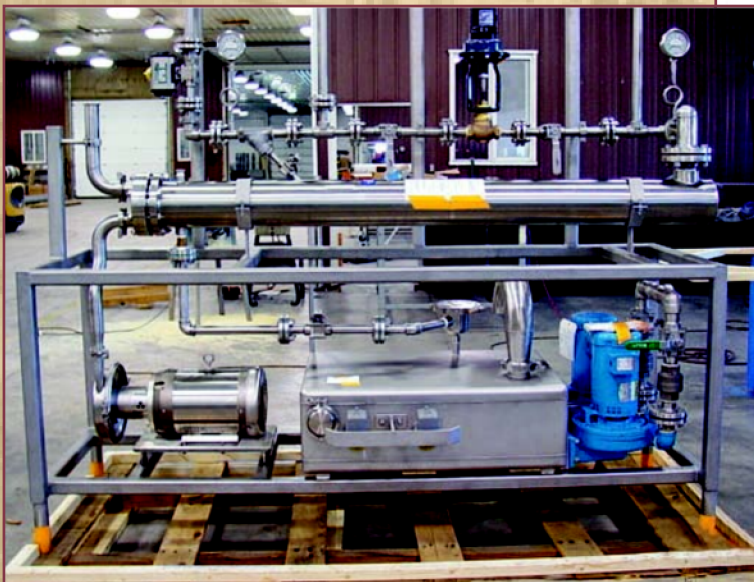


# HOT WATER SETS

Units are fabricated using all stainless steel material sized to your specifications. Shell and tube per customer's specifications using Enerquip stainless steel units. Mounting of units can be horizontal or vertical using the customer's choice of control and blocking valves. The frame is fabricated using stainless steel pipe or square tube with adjustable feet.



## CONDENSATE RECEIVER

The stainless steel Condensate Receiver can be added to units or provided separately. The Receiver is fabricated using 1/4" stainless steel plate with radius corners. The customer has their choice of return pumps and control requirements.

**NPP**  
NORTHLAND PROCESS PIPING  
INC.