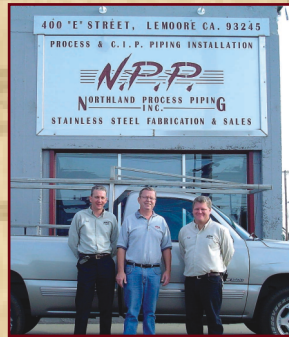


# FIELD INSTALLATION

Northland Process Piping can provide dedicated and experienced field installation personnel for your process piping and equipment installation requirements throughout the United States. NPP crews are supplied with the latest tools and equipment for sanitary cutting and welding procedures.



## STAINLESS STEEL HEX HANGERS T-304

(Specify Rubber Grommet Inserts or PVC Collars)

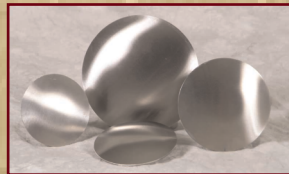
TUBE SIZE	PIPE SIZE
1/4"	1/4"
1/2"	1/2"
3/4"	3/4"
1"	1"
1 1/2"	1 1/4"
2"	1 1/2"
2 1/2"	2"
3"	2 1/2"
4"	3"
6"	4"
8"	6"
10"	8"
12"	10"
	12"



## T-304 END CAPS

(Dished and Flat Available)

TUBE SIZE	PIPE SIZE	OTHER
1"	1"	1" x 1"
1 1/2"	1 1/2"	1 1/2" x 1 1/2"
2"	2"	2" x 2"
3"	3"	2" x 4"
4"	4"	2" x 6"
		3" x 3"



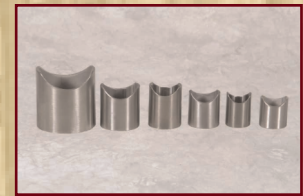
OTHER SIZES AVAILABLE UPON REQUEST

## STAINLESS STEEL CENTRIFUGAL PUMP BASE

- Base Plates 1/4" up to 7 1/2 HP, 3/8" 10 HP and over
- Bases available with or without mounting posts (Posts 2" or 3" SCH 40 pipe)
- Round or slotted mounting patterns available

## STAINLESS STEEL SADDLES

SCH-40 PIPE SIZE	16 GA TUBE SIZE
1 1/4"	1 1/2"
1 1/2"	2"
2"	
3"	



OTHER SIZES AVAILABLE UPON REQUEST

## 16 GA STAINLESS STEEL WALL FLANGES

PIPE SIZE	TUBE SIZE
1/2" x 3 1/2"	1/2" x 3 1/2"
3/4" x 3 1/2"	3/4" x 3 1/2"
1" x 5"	1" x 5"
1 1/4" x 5"	1 1/2" x 5"
1 1/2" x 5"	2" x 5"
2" x 5"	2 1/2" x 5"
2 1/2" x 6"	3" x 6"
3" x 7"	4" x 7"
4" x 8"	6" x 10"
6" x 10"	8" x 12"
8" x 12"	10" x 14"
	12" x 16"



## T-304 STAINLESS STEEL ANCHORING WALL PLATES - 3/16"

2" x 6"	w / Anchor Tap's
2 1/2" x 6"	w / Anchor Tap's
4" x 4"	w / Anchor Tap's
6" x 6"	w / Anchor Tap's
8" x 8"	w / Anchor Tap's
12" x 12"	w / Anchor Tap's



OTHER SIZES AVAILABLE UPON REQUEST

**NPP**  
NORTHLAND PROCESS PIPING  
INC.